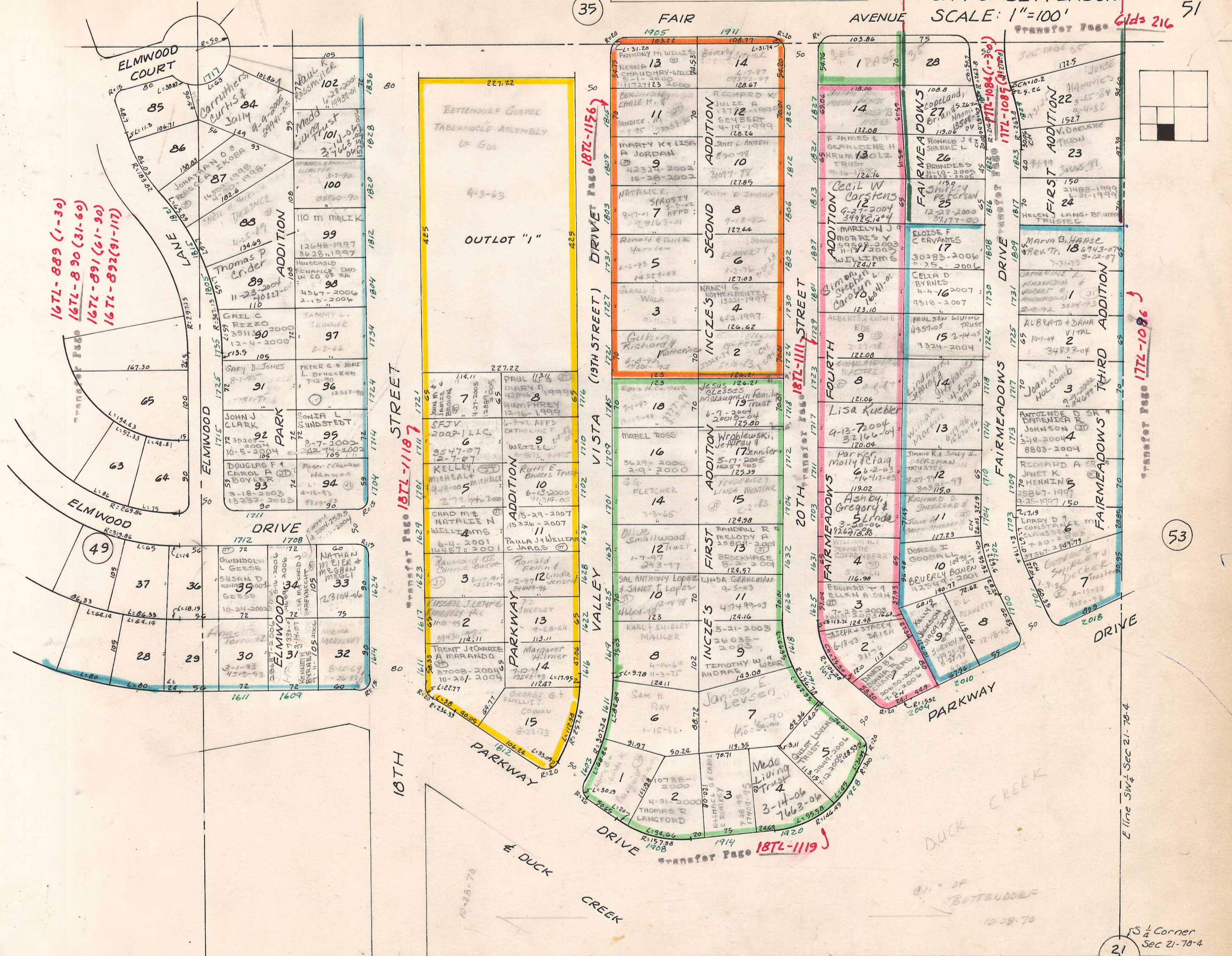


35

51



167L-889 (1-30)  
 167L-890 (31-60)  
 167L-891 (61-90)  
 167L-892 (91-117)

187L-1187

187L-1186

187L-1189

187L-1084

187L-1086

SEC 28  
 3 4  
 VOL B

21  
 28

53

Section line between secs 21 & 28

E line SW 1/4 Sec 21-78-4

SW 1/4 Corner Sec 21-78-4